

T.M. 57-48  
JAY Y. GILLENWATER, ET AL.  
D.B. 1052-57  
D.S. 1006-651852 PLAT  
D.B. 639-87, 89 PLAT

THOMAS FAUCUS KELSEY  
D.B. 711-383  
D.B. 365-475 PLAT

MATCH LINE

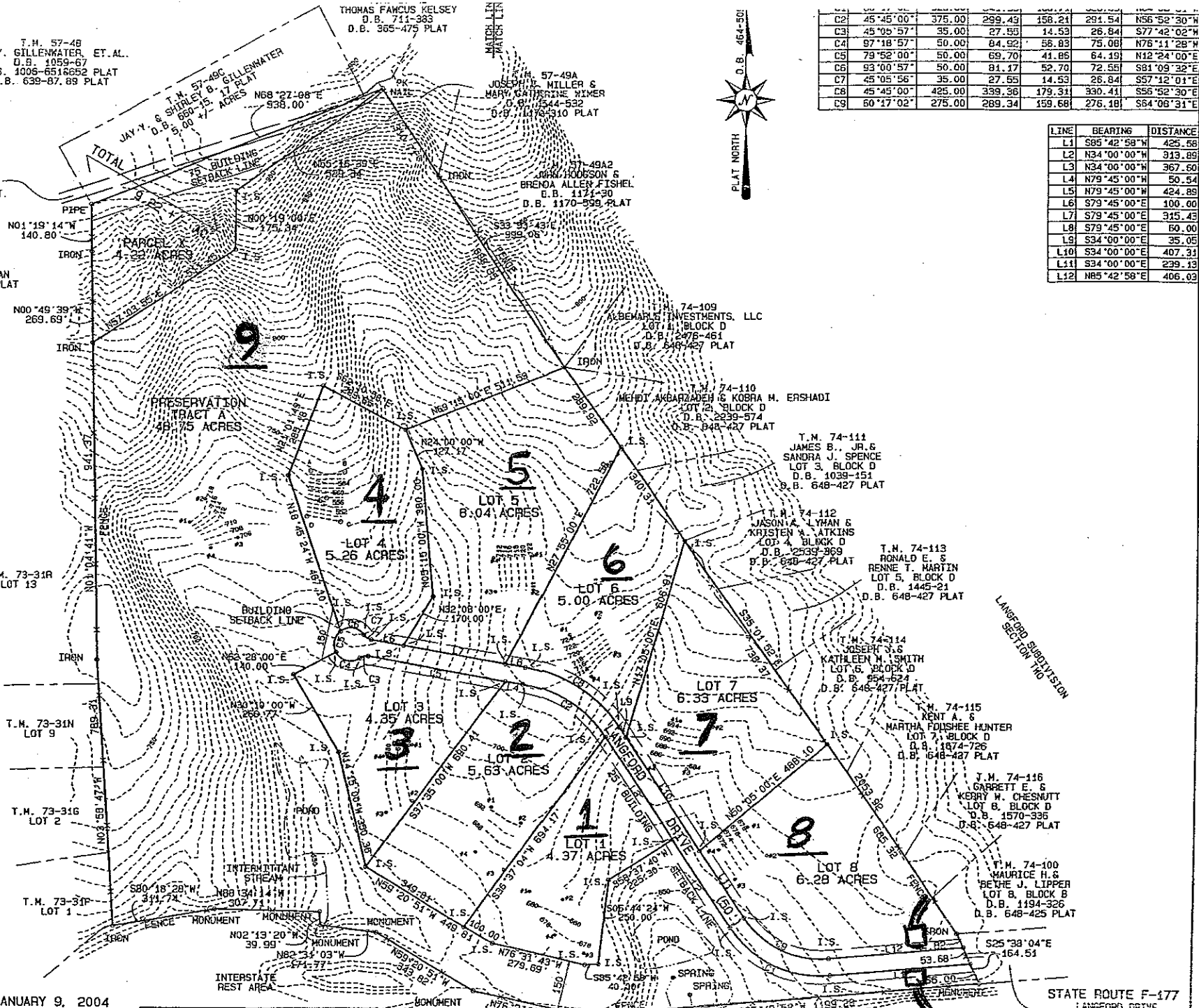
T.M. 57-49A  
JOSEPH E. MILLER &  
MARY CATHERINE WIMER  
D.B. 1544-532  
D.B. 1174-310 PLAT

C2	45°45'00"	375.00	299.43	158.24	291.54	N56°52'30"W
C3	45°05'57"	35.00	27.55	14.53	26.84	S77°42'02"W
C4	97°18'57"	50.00	84.92	58.83	75.08	N76°11'28"W
C5	79°52'00"	50.00	69.70	41.85	64.19	N12°24'00"E
C6	93°00'57"	50.00	81.17	52.70	72.55	S81°09'32"E
C7	45°05'56"	35.00	27.55	14.53	26.84	S57°12'01"E
C8	45°45'00"	425.00	339.36	179.31	330.41	S56°52'30"E
C9	60°47'02"	275.00	289.34	159.68	276.18	S64°06'31"E



STATE ROUTE 708  
30' PRESCRIPTIVE ESMT.  
(DRY BRIDGE ROAD)

T.M. 73-31E  
JOHN N. &  
JENNIFER L. WORKMAN  
D.B. 758-264, 266 PLAT



LINE	BEARING	DISTANCE
L1	S85°42'58"W	425.58
L2	N34°00'00"W	913.89
L3	N34°00'00"W	367.60
L4	N79°45'00"W	50.54
L5	N79°45'00"W	424.89
L6	S79°45'00"E	100.00
L7	S79°45'00"E	315.43
L8	S79°45'00"E	60.00
L9	S34°00'00"E	35.05
L10	S34°00'00"E	407.31
L11	S34°00'00"E	239.13
L12	N85°42'58"E	406.03

1" = 200'  
DATE: JANUARY 9, 2004  
REVISED: FEBRUARY 20, 2004  
REVISED: FEBRUARY 26, 2005

HEALTH DEPARTMENT ONLY

INTERSTATE-64  
VARIABLE WIDTH R/W  
(D.B. 472-247, D.B. 453-264, D.B. 428-56)  
(HWY. P.B. VII - 23824, HWY. P.S. IV - 164-167)

STATE ROUTE F-177  
LANGFORD DRIVE  
(FRONTAGE ROAD)  
(VARIABLE WIDTH)